



Birkdale Beach Haven
**Community
Project Inc**
We Belong Here | Nō konei ake tātou

ANNUAL REPORT

2018 - 2019

WWW.BIRKDALEBEACHHAVEN.ORG.NZ



Find us on
Facebook

facebook.com/birkdalebeachhaven



Birkdale Beach Haven
**Community
Project Inc**
We Belong Here | Nō konei ake tātou

Birkdale Community House

134 Birkdale Road, Birkdale
09 483 9149
houses@birkdalebeachhaven.org.nz

Registered Office

134 Birkdale Road, Birkdale
P O Box 66 049,
Beach Haven, Auckland, 0749
09 483 9149

Beach Haven Community House

130 Beach Haven Road, Beach Haven
09 483 9942
houses@birkdalebeachhaven.org.nz

Kids at #134

134 Birkdale Road, Birkdale
09 483 9149
022 483 9149
kids134@birkdalebeachhaven.org.nz





CONTENTS

Page 3 Mission and Vision

Page 4 Chairperson's Report

Page 6 Project Manager - Community Engagement Report

Page 12 Groups and users of BBCP

Page 14 Financials

BIRKDALE BEACH HAVEN COMMUNITY PROJECT INC

Statement of Financial Position For the Year Ended 30 June 2019

	Note	2019	2018
		\$	\$
Assets			
Current Assets			
ASB Bank Accounts	3	215,245	107,922
Accounts Receivable	3	10,179	76,672
Prepayments	3	807	1,146
Total Current Assets		226,231	185,739
Non Current Assets			
Fixed Assets	4	17,805	20,413
TOTAL ASSETS		244,036	206,153
Liabilities			
Current Liabilities			
Creditors and Accruals	5	12,267	8,512
Employee: Provision for Wages/Holiday Pay	6	11,578	11,090
Kids Holiday Programme in Advance	7	1,902	5,087
Grants not yet Utilised	8	55,836	50,912
GST	9	523	2,610
Total Liabilities		82,106	78,212
TOTAL ASSETS LESS TOTAL LIABILITIES (Net Assets)		161,930	127,941
Accumulated Funds	10	161,930	127,941

Chairman: *[Signature]*
Date: 19/9/19

Treasurer: *[Signature]*
Date: 20/9/19

financial position of Birkdale Beach Haven Community Project Inc as provided by the full Financial Report, but it gives a clear overview of the essential information and financial outcomes for the year. Copies of the fully audited Financial Report are available from Birkdale Beach Haven Community Project Incorporated.

BIRKDALE BEACH HAVEN COMMUNITY PROJECT INC
Statement of Financial Performance
For the Year Ended 30 June 2019

	Note	2019	2018
Revenue		\$	\$
Providing Goods and Services	1	308,961	345,165
Donations, Fundraising and other similar revenue	1	3,656	1,284
Fee, subscriptions and other revenue from members	1	-	-
Interest, Dividends and other investment revenue	1	161	103
Total		312,778	346,552
Expenses			
Volunteer and employee related costs	2	179,552	204,179
Costs related to public fundraising	2	191	2,488
Costs related to providing goods or services	2	82,223	74,795
Other expenses	2	16,825	13,213
Total		278,791	294,675
 Profit/(Deficit)		 33,989	 51,877



OUR VISION

People in Birkdale Beach Haven, Feel Connected and Valued
 “ We Belong here | Nō konei ake tātou ”

OUR MISSION

To create the space for the community to flourish through

Celebrating Diversity
 Connectedness
 Navigation
 Lifelong learning
 Building belonging

CHAIRPERSON'S REPORT 2019

Tēnā koutou katoa

On behalf of the Birkdale Beachhaven Community Project Board, welcome to our Annual General Meeting.

The Board has had an opportunity to further embed its understanding of its role and has enjoyed a collegial and productive year.

One of the highlights of the year was the specific consideration of the Kids@134 Holiday Programme and revisiting the intent and unique space that this programme delivers for the community. The Board spent a lot of time examining the values of the BBCP, the offering of the programme and how it assists families to manage the challenges that the school holidays can bring. We were delighted to reaffirm our commitment and to welcome Emma to deliver the programme. I would also like to acknowledge the herculean efforts of Carla, Rebecca and Annette who kept the continuity going while we took the time to step back and do this introspection. We are very grateful to you.

Our wonderful staff led by Carla have continued to be the highly dynamic and professional face of the day to day delivery of the Project. The Project has many moving parts, and without the sincere dedication that all the team bring to their roles in enabling the community to connect, the community houses would not be the thriving portals of activity that we see today.

One of our key challenges this year has been to proactively and constructively engage with the Council about the status and future of 136 Birkdale Road. We have greatly appreciated the support of the Kaipatiki Local Board in making sure that as key stakeholders we are given the opportunity to discuss this important facility.

It is important that we acknowledge the essential support of our volunteers, without whom our offering to the community would be severely diminished. Catherine Harris continues to be a capable and effective Volunteer Manager and under her guidance both the volunteers and the operation of the facilities flourish. Our sincere thanks to you all.

Phil Walker – Counsellor
Anya Black - Massage
Marilyn Sheerer –
Psychotherapist
Mariana Torkington – Art
Therapy
Simon Tennant –
Psychotherapist
Te Wānanga O Aotearoa
– Level 2 and 4 Te Reo
Classes
Te Puna cooking – people
living with Mental health
in the community
East Tamaki Health care –
diabetes support classes
BBCP Board meetings
Beginners Ukulele
Mixed Media Art classes
Qi-gong
Anya Black – Russian Drama
Zero Waste Management
Diabetes Self-Management –
Comprehensive Health
Boomerang Bags
Russian play group
ANNN – English Circle
Spanish for preschool
Spanish playgroup
Voyage of Self Discovery
Youth place making Hui
ANNN – Nowruz – Iranian New
Year Celebration
Matariki Multi Cultural Meal
Dancing in the dark

Korean Presbyterian Church
Ember – Exercise Class
Ember – Craft Class
Line Dancing
UFO'S and there spiritual
mission
Multi Media for kids
Narcissist be gone – Women
Empowerment
Ember Services – ABE0
monthly supervision
meeting
Ember services – Beach
Haven Group – Monthly
Supervision meeting
Miriam craft class
Vigil – Christchurch shooting
Friends of Shepherds Park
Conscious women's circle
Indonesian Muslim weekly
Pray group
Vatakano monthly meeting
Manasi Gupta – women's
nurturing workshop
BBCP AGM
Pest Free – Kaipatiki
Osho Meditation
60's plus Head Hands and
Heart afternoon tea
60plus head hands and Heart
high tea
Before school checks –
Plunket
U3A meetings
KLB staff members meeting



2018-2019 AT OUR COMMUNITY HOUSES

Scrabble
 HUGG – Haven Ukulele and
 Guitar Group
 Bridge Club
 Haumaru Housing – Budgeting
 Course
 Band Practice
 Community Cuppa and catch up
 French Intermediate
 French Advanced
 Hand Crafts
 Guitar – weekly Jam session
 60's Plus
 ELC Training Group
 Yogilates Friday
 Yoga
 Birkdale Beach Haven Hand
 Crafters
 Yoga Haven
 Northcote Labour LEC
 Pilates with Kate Saynor
 Community Eats – Community
 Food bank
 Navel Parents playgroup
 Oranga Tamariki Family Group
 Meetings
 Baravi Koula meetings
 Birkdale Beach Haven networking
 meetings
 Settlement meeting
 NEST Antenatal Classes
 NZ Police
 Art and Oils
 Water colour Art Class
 Peggy squares
 Baravi Koula – health checks

Adult – Mandala Art Classes
 Kids – Mandala Art Classes
 Art special abilities Group
 School Holidays Art workshop
 Staff and Volunteer meetings
 Legacy Group
 Man Up
 Joy's Art Class
 Matariki Meetings
 Starting at 60 meeting
 Yoga – for those living with
 chronic pain
 One on One Yoga
 Mothers support group
 Zero waste Kaipatiki meeting
 Births Deaths and Marriages –
 Weddings October – April
 North Shore Community House
 Managers meeting
 Refugees as Survivors
 Counselling
 Marie – Private Counselling
 Newcomers meetings
 Mums and Bubs Pilates
 Embroidery Group
 Little Polyglots –Polish playgroup
 Little Polyglots – Polish Language
 Kauri Kids Interviews
 French – Laurence – beginners
 Helena – workshops
 Helena Te Aika – Integrated
 Counselling
 Retinal Screening – DHB
 Ear Nurse – DHB
 Diabetes Nurse – DHB

None of this would be possible without our funding partners and we extend our warm gratitude to the following;

- Kaipatiki Local Board for their enduring and authentic relationship, we are also most grateful for the regular presence of Adrian Tyler at our board meetings.
- Birkenhead Licencing Trust for their overwhelming vote of confidence in what we deliver through their funding this year, we look forward to a continuing productive partnership
- Lotteries for their continuing acknowledgement of our value proposition to the community in stewarding their funding

Our community is constantly changing and the rate of that change appears to be accelerating. As a Board we have endeavoured to be responsive to that change and the needs of the community. The BBCP is a vibrant, dynamic and welcoming model of how to enable community outcomes and is poised to build significantly on its successes.

On behalf of the Board I thank you all for your contributions and wish the new Board well with its place in the ongoing journey of the BBCP.

SUZANNE VOWLES
 Chairperson



KIDS AT #134 HOLIDAY PROGRAMME

PROJECT MANAGER - COMMUNITY ENGAGEMENT REPORT 2019

Many happy times have been had at the Houses over 2018/2019 years, many memories made, things learnt, problems shared and connections made. Both houses host a variety of classes, events and courses with such diversity catering for all the community.

I thank all people involved in the project for offering volunteer time to support our people and our community to feel part of the houses. More people are walking in - for information, to have a cuppa or because they need support - than ever have before. I believe our number one job is to support, connect and to refer these people on and many are coming back on a regular basis to check in.

It's a pleasure to work with our operations team and late 2018 we welcomed Rebecca Shrubshall as the Events, Programming and Promotions Coordinator to the team. Rebecca hit the ground running and is doing well in this role. Thank you Annette for your passion for the project!

This year Birkdale House welcomed 12,124 people and was booked for 3,691 hours. Beach Haven House welcomed 11,048 people and was booked for 2,057 hours. This is a total growth of 6.3% in people using the houses.

3255
VOLUNTEER
HOURS



Each and every volunteer brings diverse skills, a drive to give back and to create a sense of belonging in our community. We offer volunteering tailored to suit each individual to ensure that the most is achieved from their time with us. We are truly thankful for the time donated to BBCP through volunteering and we could not achieve what we are and do without this support.

A special thanks to Catherine our volunteer; volunteer Coordinator. Her commitment to this role is amazing and her ability to ensure the process of volunteering is following through is second to none which ensures we offer positive volunteering experiences.

MEET THE OPERATIONS TEAM

Carla van Walen – Project Manager – Community Engagement



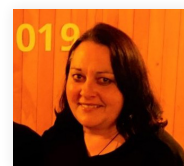
Community development is embedded in my soul! It is my privilege to lead such an amazing, forward focused, dynamic organisation which stays true to its core values. No day is ever the same and you never know what is around the corner. I love having the opportunity to support the growth of great people and give them the opportunity to flourish in a supported environment which suits their needs.

Annette Herman – Administration



Being able to help support a Community has never been so rewarding, whether the support is through House Hosting or as an Administrator, my role is so diverse and you get to meet so many interesting people every day, you never know who's going to walk through the door. I get to work alongside so many amazing Volunteers and staff members who have taught me so much and made me the person I am today.

Rebecca Shrubshall – Events, Programming and promotions



I am proud to be a part of the extraordinary team of staff and volunteers at BBCP. Growing up nearby and now living and working in Birkdale and Beach Haven, I have a strong sense of belonging, whanaungatanga to where I am, and the wonderful people here. It is truly a privilege, and I love being involved in extending a warm welcome, manaakitanga, to guests and regular visitors and helping to bring people together so that they have opportunities to have great experiences and hopefully come to regard this as their special place too.

Emma Wingrove – Lead Supervisor – Kids at #134 Holiday programme



I have the pleasure of sharing the school holidays with a fantastic bunch of children from our community. Every day is an adventure when you spend it with children and they always keep me on my toes. I love spending this time with them and ensuring they have a safe and enriching time away from school.

BIRKDALE SENSORY GARDEN

The pride of Birkdale House. The garden is for all the community to enjoy and has specific areas developed to stimulate the senses. We thank Kauri Kids Birkdale, Birkdale Primary, New Dawn Partnership, John and Cherry as well as our community gardening crew for supporting the “growth” of the garden. We also thank Birkenhead Licensing Trust for funding this project! Watch out stage 2 is in the planning.

AUCKLAND NORTH NEW COMERS NETWORK.

The Newcomers Network is about creating an inclusive community where all meet around a common appreciation of living together in a peaceful environment. It is a pleasure working with Laure and watching all of the exciting projects unfold to support our diverse communities.

HEAD HAND AND HEARTS

In partnership with Haumaru Housing, it is a pleasure to offer the 60+ community opportunities to socialise though Kai, entertainment and connections.



BIRKDALE SENSORY GARDEN

SENSORY GARDEN RIBBON CUTTING



480
FOOD BOXES
GIFTED

Thanks to Kerry, Sally and Sudipta for their time volunteering for Community Eats. This programme is 100% volunteer run with all food donated through Kiwi Harvest and community donations. So many valuable connections are made through people collecting food boxes on a weekly basis.

COMMUNITY PANTRY

A place where people gift food and where people take food. It's a simple concept; GIVE | TAKE | RESPECT.

KIDS AT #134

An affordable, fun and unique holiday programme for all in the community to enjoy, offering supportive employment to our local rangatahi. We pride ourselves on our ability to offer the kids the opportunity to lead their play and our team supports their ideas and allows them to flourish. Emma has stepped into the role of Lead Supervisor and is taking the programme from strength to strength.

AUCKLAND COUNCIL AND KAIPATIKI LOCAL BOARD

Adrian Tyler has been the local board representative for the past two years and has offered us valuable support! Helping us navigate the systems to gain some great outcomes.

Marilyn Kelly – Auckland Council Community places advisor. It a pleasure working with Marilyn; meeting on a monthly basis and creating a North Shore team within the community house managers. This has created valuable support networks. Marilyn supported the Kaipatiki Team to host the Auckland Wide community places hui. Here it was obvious the great relationships we had within the centres and how we work together to complement each other.

FINANCIAL

We have worked hard this year to stay within our budgets and have been successful! A positive bottom line allows us to have a contingency fund to ensure a strong financial future. With great thanks to Leanne and Annette for their commitment, accuracy and support. Also thanks to Lisbeth in her role as treasurer.

GRANTS

We are very thankful to the **Kaipatiki Local Board** for their ongoing support for Celebrating Communities and the Matariki Kapa Haka Festival. Each of these events are so important for connecting with our diverse communities.

Auckland Council - Nga mihi for the ongoing operational funding. We are accountable for this funding and provide monthly Statistical reports and Quarterly Operational reports as well as ensuring that we are compliant with health and safety.

Birkenhead Licensing Trust - The Trustees understand and see the importance of community and we thank Marilyn and Stuart for taking the time to come and meet with the team; to hear our story; why each member invests their time into BBCP and what differences we are making in the community. This year the trust invested in operational funding and capital purchases.

Thanks to **COGS** for operational funding



BBCP SPEAK UP MORNING TEA

COMMUNITY DEVELOPMENT

One of BBCP's key roles in the community is to ensure people feel connected and valued. To ensure we are connected with the community, we continue to develop relationships with key stakeholders who, in turn, connect with us if they have clients in need. May it be in the form of a blanket and jacket drive, parents struggling to put clothing on their kids' backs or families that

have nothing, BBCP is here and has gained the trust of the community to take the role of Kaitiaki in many forms.

EVENTS

We have developed an events calendar to ensure we are providing high class, relevant and well attended events that fit our strategic vision.



MATARIKI KAPA HAKA FESTIVAL OPENING

CELEBRATING COMMUNITIES.



In March each year, BBCP empowers and supports the community to come alive with events, classes and courses. This year 29 events were hosted by a great variety of community groups and around 2,200 people attended, and all events provided our community with opportunities to socialise. These events involved the whole community, allowing different groups to showcase themselves. Celebrating Communities also enabled BBCP to strengthen and extend its relationship with the community and community groups.

MATARIKI KAPA HAKA FESTIVAL - BIRKDALE NORTH PRIMARY

Celebrating Matariki in collaboration with local Maori, Schools and Groups, this year's festival showcased 16 local Schools and Early Learning Centres. It was a wonderful celebration with over 920 Tamariki performing, with pride, and over 1000 people watching and supporting. Within the event were opportunities for local schools and groups to share information and fundraise. We are thankful for the help from our local Maori Wardens and involvement from Kuia and Kaumatua.