



March 2024

LOVE WHERE YOU LIVE

LEARN SOMETHING NEW

CONNECT WITH YOUR NEIGHBOURS



Birkdale Beach Haven
**Community
Project Inc**
We Belong Here | Nō konei ake tātou



CELEBRATING COMMUNITIES

E ngā mana, e ngā reo, e ngā iwi, e rau rangatira mā. Nau mai haere mai ki a koutou katoa!

All peoples of the world, all speakers, all the chiefly peoples, all groups. Welcome, welcome to you all!

Celebrating Communities is an annual festival that celebrates the diverse and vibrant communities of Beach Haven and Birkdale. It coincides with *World of Cultures Festival*, *Eco Fest* and *Neighbours Month Aotearoa*, offering a lively programme that encompasses all of these wonderful events.

With funding from Kaipātiki Local Board, the team from Birkdale Beach Haven Community Project (BBCP) work alongside local residents, community and cultural groups, businesses, education providers and community organisations. Working together to host an array of local events and activities throughout the month of March.

Celebrating Communities supports our community to come together to connect, learn and celebrate!



CONTACT

Birkdale Beach Haven Community Project
www.birkdalebeachhaven.org.nz
admin@birkdalebeachhaven.org.nz
(09) 4839149

MARCH CALENDAR

One-Off Events

- **Saturday 2/3:** Beach Haven Kindergarten Garage Sale, 8.30am-11.45
- **Saturday 2/3:** BBCP Open Day, 10am-1pm @ Birkdale Community House, Hall & Park
- **Saturday 9/3:** Steps Back in Time, 8am departure from Birkdale Community House
- **Saturday 9/3:** Girls Skate, 3pm-4pm @ Tui Park
- **Sunday 10/3:** Beach Haven Fun Run/Walk, 8.45am @ Shepherds Park
- **Sunday 10/3:** Burundian Celebration of International Womens Day, 4pm-8pm @ Birkdale Hall
- **Saturday 16/3:** Pasefika Celebration, 10am-2pm @ Beach Haven Community House
- **Sunday 17/3:** Nature Play with Barefoot Harry, 10am-12pm @ Tui Park
- **Tuesday 19/3:** BHP Colour Run, 5.30-7pm @ Beach Haven Primary
- **Friday 22/3:** Beach Haven Block Party, 3.30pm-6pm @ Opaketai Gardens
- **Friday 22/3:** End of Summer Festival, 5pm-8pm @ Kauri Park School
- **Saturday 23/3:** Coastal Clean Up, time TBC @ Hilders Park Beach
- **Wednesday 27/3:** Whānau Day, 10am-12.30 @ Beach Haven Community House

Weekly Events

- **Mondays:** Kai Tahi, 5.30-6.30pm @ Beach Haven Community House & Birkdale Hall
- **Tuesdays:** Kōrero Māori Mai, 11am-1pm @ Birkdale Community House
- **Wednesdays:** MāMāFIT, 9.30-10.30am @ Beach Haven Community House
- **Wednesdays:** Kiddy Kapa Haka, 10.30-11.30am @ Beach Haven Community House
- **Thursdays:** Pasifika Zumba, 6pm-7pm @ Beach Haven Ratepayers Hall
- **Thursdays:** West African Drumming, 6.30-7.30pm @ Birkdale Hall
- **Fridays:** BDC Hip Hop Dance Class, 6pm-7pm @ Birkdale Intermediate
- **Various Dates:** KCFT Summer Fun - www.kcft.org.nz
- **Various Dates:** Kaipātiki Project EcoFest - www.kaipatiki.org.nz/ecofest

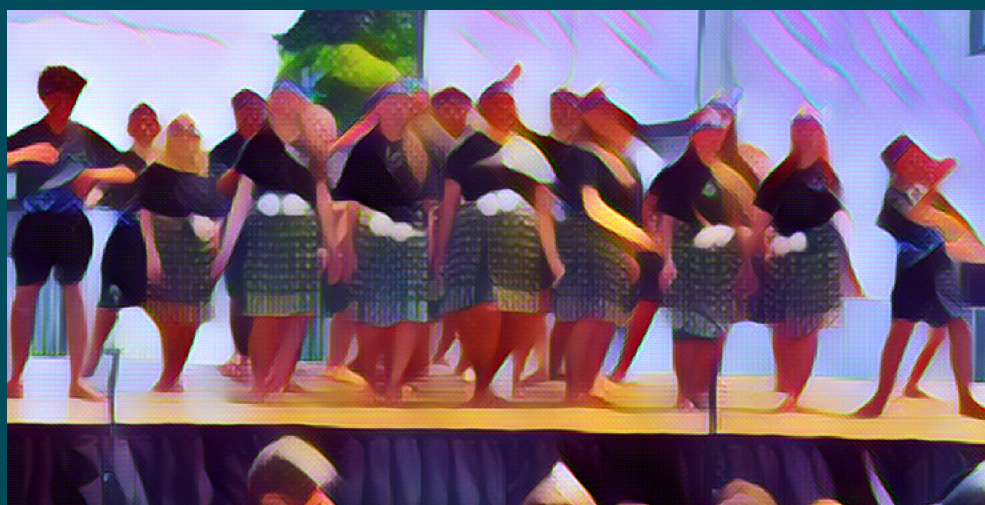


TAHA WAIRUA SPIRITUAL

Pasefika Celebration - North Shore Pasefika Forum host a day of fun, music, food and dance to celebrate our local Pasefika communities. Beach Haven Community House, 10am-2pm Saturday 16 March. More info www.facebook.com/2023NSPF

Kiddy Kapa Haka - Haere mai ki te kōrero, ki te kanikani, me te waiata! A fun playgroup for whānau with pēpē & tamariki. Beach Haven Community House, 10.30am-11.30am every Wednesday. www.facebook.com/KiddyKapaHaka

West African Drumming - Learn how to play Djembe, Dunduns, Shakers and Bells. Beginners are welcome and drums are provided. First class free in March! Birkdale Hall/House 6.30-7.30pm every Thursday www.facebook.com/krakotokra



TAHA HINENGARO

MENTAL & EMOTIONAL

Burundian Celebration of International Women's Day - join our Burundian community for an afternoon of cultural music, dance, conversation and kai to recognise the achievements of women and advocate for gender equity. Birkdale Hall, 4pm-8pm Sunday 10th March

Kōrero Māori Mai - Join us for a free, friendly place to kōrero Māori, no matter what level you speak. A semi-structured, safe space to ask questions, learn waiata, share stories and strengthen our understanding and use of te reo Māori. Birkdale Community House, 11am-1pm every Tuesday



TAHA WHĀNAU FAMILY & SOCIAL

BBCP Open Day - Aroha mai, aroha atu! Join us for a day of fun, music, performances and craft for the whole whānau. Birkdale Community House and Hall, 10am-1pm Saturday 2nd March

Kindy Community Garage Sale - Check out the annual community garage sale fundraiser. Bargains to be had for everyone. Everything for \$1 – clothing, books, toys, household items and much more. Beach Haven Kindy, 8.30-11.45am Saturday 2 March.

End of Summer Festival - Bring your whānau for an evening of festival fun, kids activities, food and drink, games and prizes! Kauri Park School, 5-8pm Friday 22nd March
www.facebook.com/kauriparkschool

Beach Haven Block Party - An afternoon of music, kids activities, kai, performances and fun for the whole whānau. Bringing together many of the community groups featured throughout this month of celebrations. Opaketai Gardens, 3.30pm-6pm Friday 22 March

Whānau Day - Bring the tamariki along to join whaea Briar and whaea Tina for a morning of whānau activities at Beach Haven Community House:

10am - learn new kupu to kōrero Māori with pēpi

10.30 - waiata and kanikani at Kiddy Kapa Haka

11am - learn how to make raranga putiputi (woven flax flowers)

12pm - BYO kai for a picnic in Shepherds Park

Summer Fun - dates and locations vary, see www.kcft.org.nz



TAHA TINANA

PHYSICAL

Girls Skate - A safe and welcoming skate lesson for wāhine to learn the basics. Skate boards and safety gear provided. Tui Park, 3pm-4pm Saturday 9 March www.facebook.com/girlsskatenz

Beach Haven Fun Run/Walk - 1km and 5km courses on the newly upgraded tracks through our beautiful coastal bush. Costume and participation prizes. Shepherds Park, sign-up 8.45am Sunday 10 March
Course maps and more info at www.facebook.com/beachhavenfunrun

BHP Colour Run - Join the tamariki and whānau from Beach Haven Primary School for a run through the rainbow! Sausage sizzle, spot prizes and fun for the whole family. Beach Haven Primary, 5.30pm Tuesday 19 March 5.30pm www.facebook.com/BeachHavenPrimary

Kai Tahi - Join us for a delicious and free hot kai provided by Life Community Kitchen, every Monday 5.30pm-6.30pm at both Beach Haven Community House and Birkdale Hall

MāmāFIT - A fun and supportive workout for mums with space for pēpi & tamariki to play. Beach Haven Community House, 9.30-10.30am every Wednesday www.ablefittraining.com

Pasifika Zumba - A fun workout for the whole whānau. Beach Haven Ratepayers Hall, 6pm-7pm every Thursday
www.facebook.com/2023NSPF

BDC Hip Hop - Join Jambeatz and Mish for a fun and free hip hop dance class. Birkdale Intermediate School, 6pm-7pm every Friday
www.facebook.com/birkdaleintermediateschool





Steps Back in Time

Local author and historian, Matt Elliott, will lead a walk around Birkdale, telling stories of old landmarks and the area's remarkable horticultural history, followed by morning tea. Birkdale Community House, 8am-10am Saturday 9th March

Nature Play - Come along and join Barefoot Harry to enjoy some sensory nature fun for the whole whānau - connect with nature and your tamariki! Tui Park, 10am-12pm Sunday 17 March.

www.facebook.com/barefootednz

Coastal Clean up - Join this day of action to clear the rubbish in the Upper Waitematā Harbour. BYO boats/kayaks/SUP or join a group of walkers collecting rubbish from the shoreline. Hilders Park Beach, Saturday 23 March. See website for updates -

www.facebook.com/friendsoshepherdspark

EcoFest - locally hosted sustainability events with Kaipātiki Project. See website for more info www.kaipatiki.org.nz/ecofest



WHENUA
LAND & PLACE

EVENT LOCATIONS

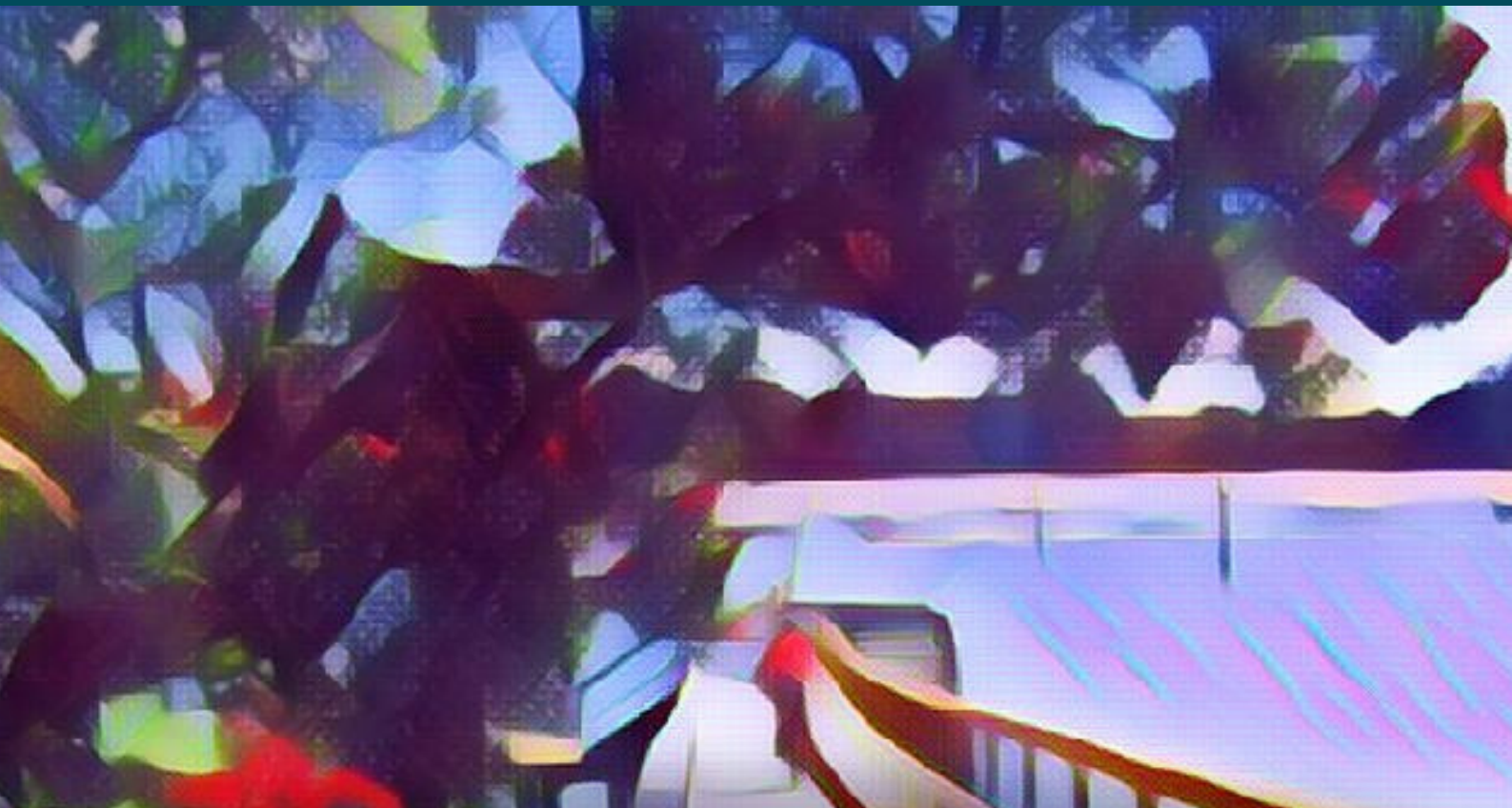
- Beach Haven Community House - 130 Beach Haven Road, Beach Haven
- Birkdale Community House, Hall & Park - 134 Birkdale Road, Birkdale
- Birkdale Intermediate School - 200 Birkdale Road, Birkdale
- Hilders Park Beach - Beach Haven Road
- Tui Park - 37 Rambler Crescent, Beach Haven
- Ratepayers Hall - 336 Rangatira Road, Beach Haven
- Opaketai Gardens - 364 Rangatira Road, Beach Haven
- Beach Haven Primary - 50 Tramway Road, Beach Haven
- Shepherds Park - 130 Beach Haven Road, Beach Haven
- Kaipātiki Project - 17 Lauderdale Road, Birkdale
- Kauri Park School - 16 McGlashen Place, Beach Haven





Birkdale Beach Haven Community Project

www.birkdalebeachhaven.org.nz
admin@birkdalebeachhaven.org.nz
(09) 4839149



Birkdale Beach Haven
**Community
Project Inc**
We Belong Here | Nō konei ake tātou

